

The Personal Learning Device (PLD) Initiative



Briefing for Parents

Ting KT

SH ICT

A PRESENTATION BY
MINISTRY OF EDUCATION, SINGAPORE

The National Digital Literacy Programme and the PLD Initiative

An Overview

The National Digital Literacy Programme (NDLP)

1. The NDLP was launched in March 2020 to help students **strengthen their digital literacy and acquire digital skills** needed to navigate an increasingly digitalised world.
2. Under the NDLP, every secondary school student will **own a school-prescribed Personal Learning Device (PLD)**. Students may use funds from their Edusave Account to pay for the PLD.

Intended Outcomes of the PLD Initiative

The use of the PLD for teaching and learning aims to:



Support the Development of Digital Literacy



Support Self-Directed and Collaborative Learning



Enhance Teaching and Learning

Learning with a PLD

Manjusri Secondary School

How will your child/ward use the PLD?

At Manjusri Secondary School, your child/ward will be using the PLD for

1. active learning in school
2. Alternative Assessments (AA) and Performance Based Assessment (PBA)
3. Home-Based Learning (HBL), Blended Learning (BL)
4. other school activities and programmes.

**Supporting Students in the Safe
and Effective Use of the Devices**

Cyber Wellness Concerns Identified by International Studies



Harmful Online Content

50% of Singaporean teenagers are exposed to cyber threats and 28% of them are exposed to violent content.

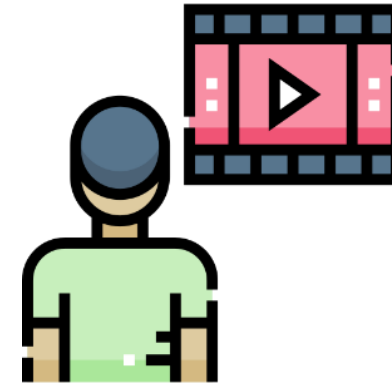
(COSI, 2020)



Distraction from Learning

72% of teens feel compelled to immediately respond to texts, social posts and notifications.

(Kimball & Cohen, 2019)



Excessive Screen Time

Teens who don't sleep enough report higher levels of depressive symptoms than well-rested peers (31% vs. 12%).

(Kimball & Cohen, 2019)

Schools are reminded to **remove this slide** before sharing this deck of slides with parents through PG or the school website. Please remove this textbox when presenting slides to parents.

Supporting Students in the Safe and Effective Use of the Devices

The school has measures in place to enable a safer digital environment for learning with the use of PLDs, e.g.

- School rules on digital device use
- Classroom management and routines
- Cyber Wellness Education in CCE
- Partnering parents/guardians to support students in their use of technology for learning
- Device Management Application (DMA) to support a safer digital environment for learning

Classroom Management and Routines

Why are classroom routines important?

Set expectations and create a safe environment for active learning to take place.

Prepare

- fully charged PLD with earphones
- check Google Classroom and calendar

Lock

- in locker during recess and PE

During lessons

- login using student ICON
- half screen when listening

Parents'/Guardians' Role

- We would like to partner parents/guardians so that that students are well supported in their use of technology for learning.
- As parents/guardians, you can help in the following ways:
 - Model good digital habits for your child/ward e.g. parents/guardians not using devices during family meals.
 - Know your child/ward well, and have conversations with your child/ward about safe and responsible use of technology.
 - Discuss and come up with ground rules for internet/device usage that both your child/ward and you can agree with.
 - Encourage your child/ward to use productivity tools using his/her PLD, to organise information and simplify tasks for efficiency.

Role of the DMA in Providing a Safer Digital Environment for Learning

DMA Installation

- Your child's/ward's PLD will be installed with a DMA to provide a safer digital environment for learning.
- DMA will be installed after the collection of the device. Students will be guided on the installation.
- The installation of DMA applies to both devices purchased through the school and any student-owned devices that parents/guardians opt for the student to use in lieu of the school-prescribed PLD.
- The DMA will be funded by MOE and will be uninstalled from the device when your child/ward graduates/leaves the school.

In-School DMA Settings (Default)

Schools will determine DMA settings for **in-school use**. As a default, these settings will continue to be in place after school as well:

- MOE and the school will set the level of web content filtering, including filtering out objectionable content or content that may not be conducive to teaching and learning (e.g. **social media**, pornography, gambling, or websites containing extremist content)
- Students will be able to use the device from **6:00 a.m. to 11:00 p.m.** daily.
- The school will determine the apps and programs to be installed to support teaching and learning

Providing Parents/Guardians with Greater Choice of After-School DMA Parent Options

The following tables outline the different levels of restrictions, controls, and monitoring for the different DMA options after school hours.

Default	Option A	Option B
<p>In-school DMA settings will continue after school hours</p>	<p>Parents/Guardians can modify the DMA settings after school hours</p>	<p>Parents/Guardians can choose to disable DMA after school hours</p>
<p>For parents/guardians who want their child’s/ward’s use of the device to be restricted only to teaching and learning, and prefer to leave it to the school to decide on DMA settings after school hours.</p>	<p>For parents/guardians who want more leeway over the use of the device, and prefer to take charge of the level of restrictions for their child’s/ward’s use of the device after school hours.</p>	<p>For parents/guardians who do not want their child’s/ward’s use of the device to be regulated by DMA after school.</p>

- Having default school settings continue after school hours is the best option for parents/guardians who prefer not to, or do not feel ready to manage their child’s/ward’s device use on their own.
- Parents/guardians can request to change their choice of DMA settings at any time.

Providing Parents/Guardians with Greater Choice of After-School DMA Parent Options

	Default	Option A	Option B
Protecting students from objectionable content	MOE/school sets level of web content filtering	Parents/Guardians can apply additional content filtering	No content filtering
Reduce distractions from learning through control of applications	Parents/Guardians and students are <u>unable</u> to install additional applications	Parents/Guardians and/or students can install additional applications after school hours, but these applications are disabled during school hours	
Limit screen time	School sets hours during which students are able to use the device online	Parents/Guardians can modify the amount of screen time	No control over screen time

Providing Parents/Guardians with Greater Choice of After-School DMA Parent Options

	Default	Option A	Option B
Parent/guardian account	Provided to allow monitoring of PLD activities after school hours		Not provided
Monitor students' cyber activities	Parents/Guardians can track their child's/ward's browser history after school hours		<p>Parents/Guardians will not be able to monitor or control their child's/ward's use of the device through the DMA after school hours</p> <p>No data* will be collected during use of PLD after school hours</p>

Deciding on the Choice of After-School DMA Parent Option

Parents/guardians may wish to consider the following questions before deciding on which After-School DMA Parent Option is best for your child/ward.

1. Child's/ward's current device usage habits

- How much time does my child/ward spend on their device?
- How well is my child/ward able to regulate their device usage on their own?
- Does my child/ward get easily distracted while doing online learning?

2. Parents'/Guardians' involvement

- How confident and familiar am I with managing my child's/ward's cyber wellness?
- Are there existing routines and open conversations on the use of the Internet at home?
- Am I aware of how to prevent different types of cyber threats that my child/ward might face?

Additional Resources for Parents

To support you in keeping your child/ward safe online, you may refer to these additional resources:

- Parent Handbooks (I) and (II) on Learning with a Personal Learning Device (shared by the school)
- Parent Kit on Cyber Wellness for Your Child (<https://go.gov.sg/moe-cyber-wellness>)
- Parent Kit on Raising a Digitally Smart Child (<https://go.gov.sg/moe-raising-a-digitally-smart-child>)
- Parenting with MOE: Instagram Live session on Raising Digitally Smart Kids (<https://go.gov.sg/iglive-raising-digitally-smart-kids>)
- Schoolbag article 'Keeping our teens safe online' (<https://www.schoolbag.edu.sg/story/keeping-our-teens-safe-online>)
- MOE Cyber Wellness Programme (<https://www.moe.gov.sg/education-in-sg/our-programmes/cyber-wellness>)
- Media Literacy Council's Resources for Parents (<https://go.gov.sg/better-internet-sg>)
- National Library's Learning & Information Literacy Resources (<https://sure.nlb.gov.sg/>)
- TOUCH Community Services (<https://help123.sg>)

Device and Funding Information

Manjusri Secondary School's PLD



The school will be using the **Lenovo Chromebook 500e** for teaching and learning.

Total Cost with enhanced bundle and GST: \$587.50

Intel Celeron N100, 8GB RAM
64GB eMMC 1.3 kg,
12.2" screen size

Manjusri Secondary School's PLD



Lenovo Chromebook 500e

The school chose the device because of:

- Teaching and learning affordances
- Touch screen
- Portability
- Cost
- Battery life
- Boot up time
- Device management

PLD Bundle

Device Bundle includes

Your child's/ward's PLD will come with the **Enhanced Device Bundle** which includes*:

- 3-year warranty and 3-year insurance
- 2 repairs or 1 replacement claim

Locker and Lock

- Lockers are installed outside each classroom.
- Students are required to bring their own lock.



Technical Support for Students' Devices

Technical support will be provided to students through MJR Helpdesk in school and Lenovo Service Centre:

MJR Helpdesk

- Troubleshooting of device issues
- Solve connectivity issues
- Collection of devices to be sent for repairs

Opening hours:

Mon – Thu: 7:45 – 9:00 am, 1:50 – 3:00 pm

Fri: 7:45-9:00am, 12:40-2:00 pm

Venue: School Library, Level 4

Lenovo Service Centre: refer to MJR school website -> NDLP

Funding Support for Singapore Citizen (SC) Students

- **The cost of the device bundle can be paid using your child's/ward's Edusave account**, after setting aside provision for payment of miscellaneous fees.
- To ensure the affordability of devices, MOE has provided Edusave top-ups of \$200 in 2020 to 2022, and \$300 in 2023, to all eligible Singaporean students in primary and secondary schools.
- This is on top of the annual \$290 credited into the Edusave account for Secondary School students and \$230 for Primary School students.

Funding Support for Singapore Citizen (SC) Students

- For SC students who are on MOE Financial Assistance Scheme or whose family's monthly income meets the following criteria:

Gross Household Income (GHI) \leq \$3,000, or

Per Capita Income (PCI) \leq \$750

MOE will subsidise 50% of device bundle cost or \$350, whichever is lower.

- The remaining amount will be payable from the students' Edusave account. If there is insufficient balance in the students' Edusave account for the remaining amount, MOE will provide additional subsidy so that the cash out-of-pocket (OOP) is \$0.

What's Next?

WHAT'S NEXT?

Parental Consent for Procurement



Parents with Singpass can access the **Parental Consent for the Purchase of Personal Learning Device (PLD)** via the following link:

<https://go.gov.sg/pdlpadmin>

* Parents/Guardians without Singpass can request for the hardcopy letter via your child's/ward's form teacher.

For Singapore Citizens (SC) Students

Time Frame	Activity
12 Jan 2024	<p>Submit Parental Consent for the Purchase of Personal Learning Device (PLD) via the FormSG link on the previous slide.</p> <p>Parents without access to Singpass can submit their consent via hardcopy, which includes the following:</p> <ul style="list-style-type: none">• Intent to Purchase Personal Learning Device (PLD);• Standing Order for Use of Edusave Account; and• Authorisation Form.
March to April 2024 (TBC)	Collection of devices by students

For Permanent Residents / International Students

Time Frame	Activity
12 Jan 2024	Submit Parental Consent for the Purchase of Personal Learning Device (PLD) which includes the following: <ul style="list-style-type: none">• Intent to Purchase Personal Learning Device (PLD);• Authorisation Letter <p><Schools should insert instructions on how the form should be submitted></p>
Feb 2024	Parent/Guardian to make payment via Giro/PayNow
March to April 2024 (TBC)	Collection of devices by students